

Gardening 101



Why Garden?

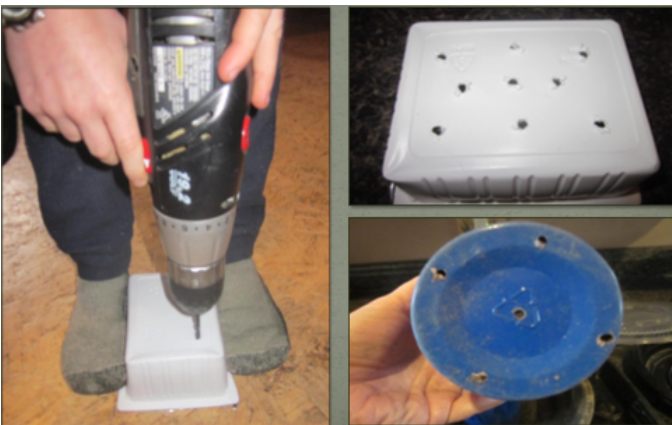
What do I need?

- Pots
 - * Shallow containers to start
 - * Medium size pots/containers
 - * Larger Pots
- Saucers, trays, containers (collect water)
- Potting Mix
- Seeds
- Tools (shovel, hoe, etc)
- Water
- Warmth
- Sunshine

Containers



Drainage



Potting Mix



Selecting Seeds - Short Season

(Short Season = 110 days or less w/o frost)

Cool Season Hardy Crops

(adapted to cool, frost-prone climates)

- * Asparagus, beets, broccoli, brussels sprouts, cabbage, carrots, cauliflower, garlic, leeks, lettuce, onions, peas, radish, spinach, Swiss chard, turnips

Cool Season Tender Crops

(must use season extenders)

- * Green beans, potatoes, corn, cucumbers, peppers, tomatoes, onions, pumpkins, squash

www.extension.uidaho.edu/homegard.asp

Seed Package Deciphering

- Heirloom vs. Non-Heirloom
- Package Description
 - Days to maturity (check description - from emergence; from transplant; direct seeding)
 - Disease Resistance
 - Description
 - Weather Tolerance
 - Planting Depth
 - Seed/Row Spacing
 - Days to Germination
 - Harvesting



Keep Records



When to Sow Seeds

- Transplants (Sow Indoors)
 - Sweet Potato slips - Jan.
 - Celery & Eggplant - early Feb.
 - Peppers & Tomatoes - mid/late Feb.
 - Onion (seed) - mid March
 - Cabbage - early/mid April
 - Broccoli & Cauliflower - mid/late April
 - Melon - late April
 - Cucumber - early/mid May
 - Winter Squash - mid May

When to Sow Seeds

- Direct Sow (Sow Outdoors)
- When soil can be worked (April/May)
 - Chard, Greens, Lettuce, Spinach
 - Peas (Garden/snap)
 - Onion Sets
- After Frost - June
 - Asparagus, Beans, Beets, Corn
 - Parsnips, Potatoes
 - Summer Squash, Turnips

Let's Get Started!

Method

- Warm soil
- Wet soil
- Soak seed?
- Depth? (see package)
- Cover seed?
- Water in seed

- Gently tap top of soil (air pockets)
- Set in a warm sunny location
- Water as needed (dry top layer)
- Rotate pot
- Transplant?
- Stake as needed
- Plant into the garden

Sow Seed



Transplanting: When & How? (Tomato, Pepper, Eggplant, Onion)



Tomatoes



Bury to the "Neck"



Second Transplant



Adding Support



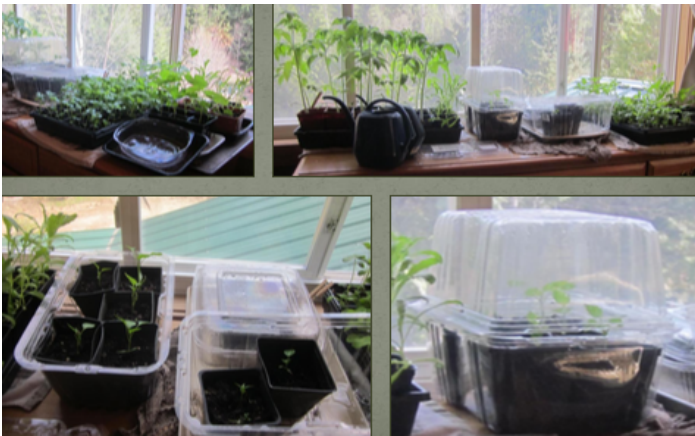
Third Transplant (Tomatoes)



Eggplant



Mini-Greenhouses



Prepare Your Garden

Put Up a Good Fence



Prepare Your Soil

- Soil Testing
- Amendments
 - Manure
 - Newspaper
 - Worm Castings
 - Compost
 - Kitchen waste
 - Grass Clippings
 - Dead Leaves
 - Pine Needles
- Warm Soil
 - Black Plastic



No Garden?



Hardening Off



Into the Hoop House



Raised Beds



Adding Support



Thinning/Transplanting



Pollination - Bees?

- Tomatoes - shake vines
- Eggplant - self pollinating
- Cucumber - check plant description (Parthenocarpic - pollination not required)
- Melon - hand pollinate
- Summer/Winter squash - hand pollinate

Extend the Season

Into a Pot (Mid Oct — Dec)



Row Cover - Hoops

(Beginning/End of Season)



Wire Wicket Supports



Grow Boxes



Hoop-House



Other Crops

Sweet Potato Slips



Garlic - Mid October



Asparagus



Winter Squash - Season Extension



Green Beans

- Start in Flats
- Bush Beans
 - No Support
- Pole Beans
 - Fence
 - Teepee
 - String
 - Cattle panel
 - Arch



More Crops

- Strawberries
- Raspberries
- Blueberries
- Carrots, Beets, Turnips
 - Excellent keepers
- Cabbage - Keep Covered
 - Storage
 - Excellent keepers
- Potatoes
 - Save seed - build up stock
 - Excellent keepers

- Corn
 - Shortest day
 - Sow in flats - transplant
- Jerusalem Artichokes
 - Spread/multiply
 - Leave in ground, harvest as needed



Saving Seed - Heirloom

- Summer - Fall
- Save 1-2 plants
- Collect seed
- Book: Seed to Seed, by Suzanne Ashworth



Seed Storage

- Label
 - Name
 - Company
 - Date
- Completely dry
- Storage
 - Cool
 - Dark
 - Dry



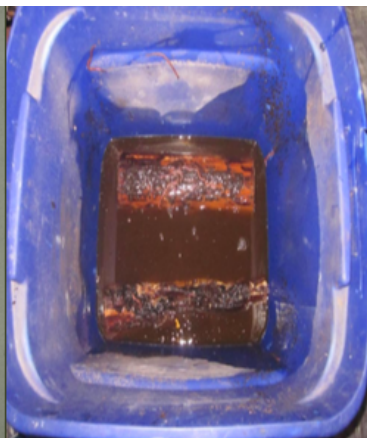
"Vermicomposting"

How to Make Your Own Worm Bin

Composting Worms (Red Wigglers) vs. Earthworms



Make Your Own



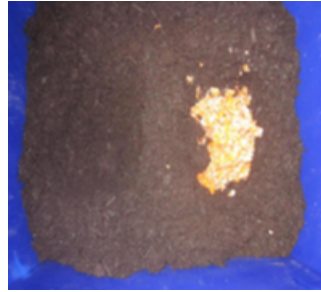
Types of Bedding

- Types of Bedding
 - Leaf Mold
 - Peat Moss
 - Crushed Egg Shells/Powdered Limestone
 - Provide Grit
 - Small Wood Chips
 - Animal Manure
 - Composted
 - Horse, Rabbit, cow
 - Newspaper/Paper
 - Machine or Hand Shredded

Bury Kitchen Waste (2:1)

2-3 Lbs of Worms

1-1.5 Lbs Garbage/Dry



Harvesting (Separating)

